

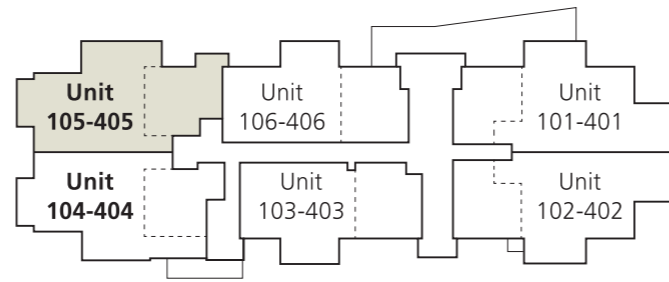
# QUEST ROCKHAMPTON APARTMENT TYPE 1

2 Bedroom + 2 Bathroom

Apartment: 67m<sup>2</sup>

Studio: 28m<sup>2</sup>

**TOTAL AREA: 95m<sup>2</sup>**



Level 1-4



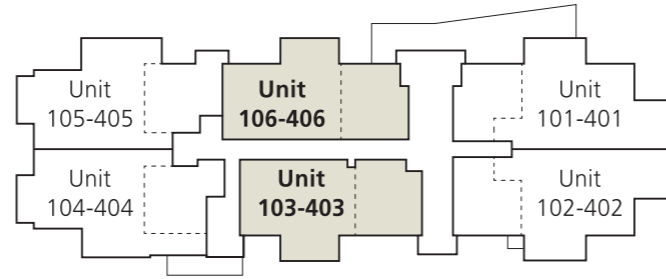
# QUEST ROCKHAMPTON APARTMENT TYPE 2

2 Bedroom + 2 Bathroom

Apartment: 54m<sup>2</sup>

Studio: 28m<sup>2</sup>

**TOTAL AREA: 82m<sup>2</sup>**



# QUEST ROCKHAMPTON APARTMENT TYPE 3

## Units 101, 301, 501, 701 and 901

2 Bedroom + 2 Bathroom 81.60  
Balcony 17.58  
**TOTAL AREA: 99.18m<sup>2</sup>**

## Units 201, 401, 601 and 801

2 Bedroom + 2 Bathroom 81.60  
Balcony 11.63  
**TOTAL AREA: 93.23m<sup>2</sup>**

## Unit 504

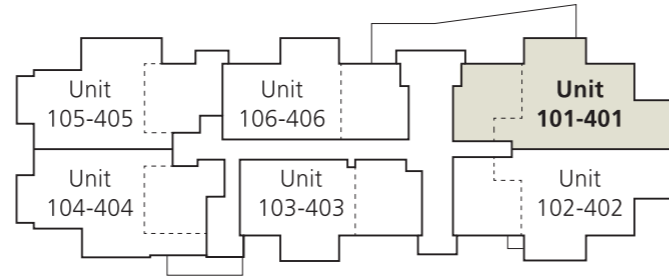
2 Bedroom + 2 Bathroom 81.60  
Balcony 18.74  
**TOTAL AREA: 100.34m<sup>2</sup>**

## Units 604 and 804

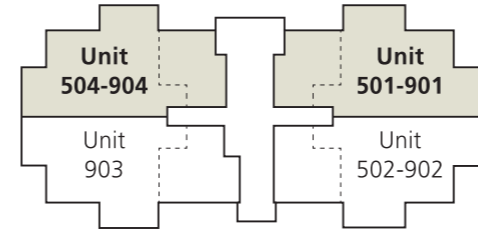
2 Bedroom + 2 Bathroom 81.60  
Balcony 9.52  
**TOTAL AREA: 91.12m<sup>2</sup>**

## Units 704 and 904

2 Bedroom + 2 Bathroom 81.60  
Balcony 13.95  
**TOTAL AREA: 95.55m<sup>2</sup>**



Level 1-4



Level 5-9



**Disclaimer:** Individual apartments may have slight size variations. The floor plans depicted are indicative only and not to scale. The floor plans and level plans should not be relied upon by the Buyer, and the Seller is not liable to the Buyer as a result of any changes to floor plans, errors or omissions. The information contained in this brochure is for guidance purposes only. All information is provided in good faith and is believed to be accurate, however prospective purchasers should not rely on this information and should make their own enquiries.

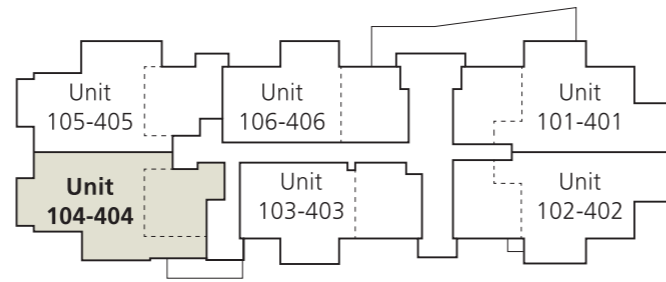
# QUEST ROCKHAMPTON APARTMENT TYPE 4

2 Bedroom + 2 Bathroom

Apartment: 67m<sup>2</sup>

Studio: 27m<sup>2</sup>

**TOTAL AREA: 94m<sup>2</sup>**



# QUEST ROCKHAMPTON APARTMENT TYPE 5 (PWD)

2 Bedroom + 2 Bathroom

Apartment:

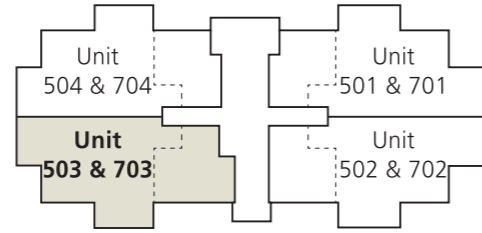
73m<sup>2</sup>

Studio:

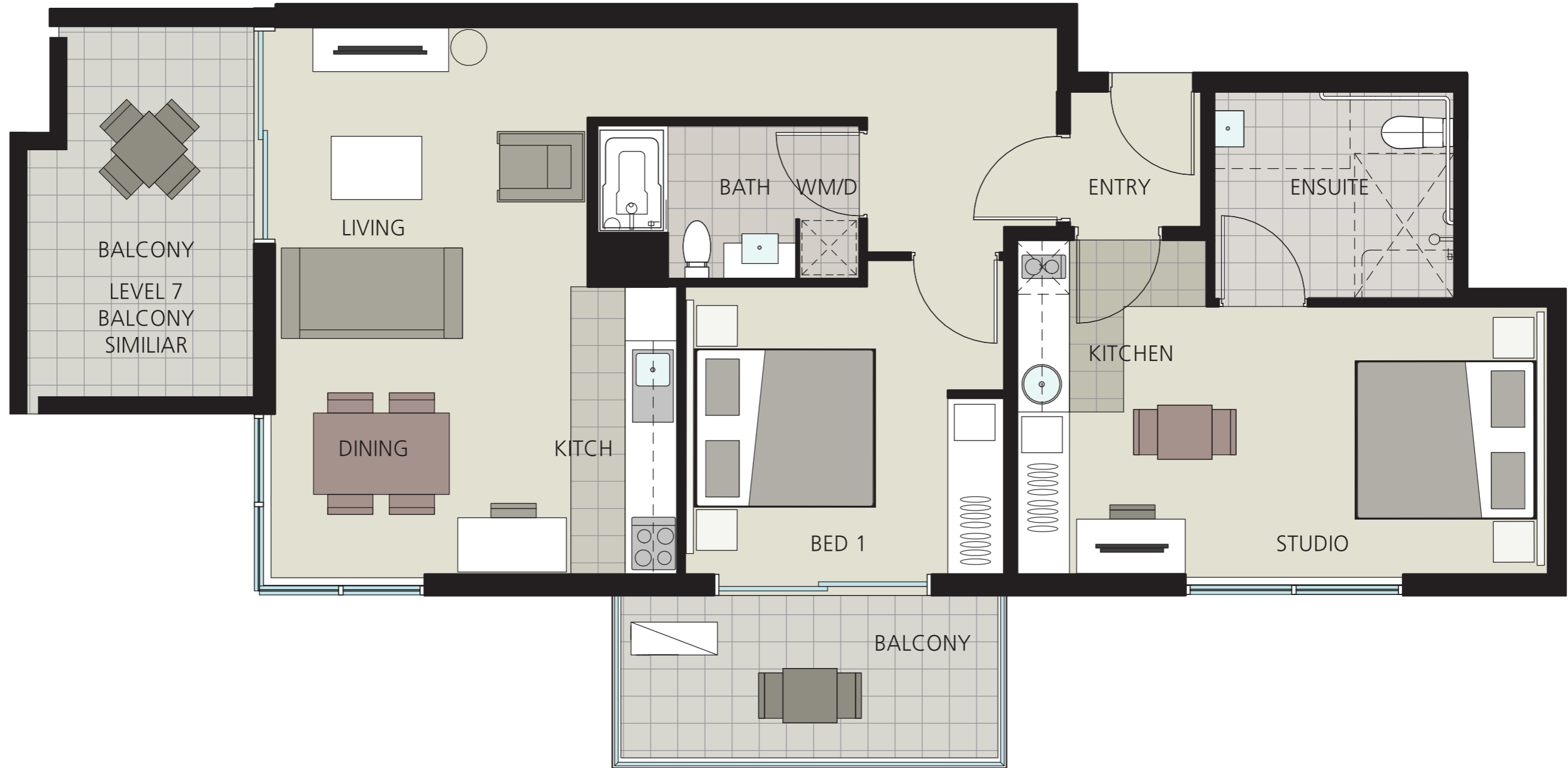
27m<sup>2</sup>

**TOTAL AREA:**

**100m<sup>2</sup>**



Level 5 & 7



**Disclaimer:** Individual apartments may have slight size variations. The floor plans depicted are indicative only and not to scale. The floor plans and level plans should not be relied upon by the Buyer, and the Seller is not liable to the Buyer as a result of any changes to floor plans, errors or omissions. The information contained in this brochure is for guidance purposes only. All information is provided in good faith and is believed to be accurate, however prospective purchasers should not rely on this information and should make their own enquiries.

# QUEST ROCKHAMPTON APARTMENT TYPE 6 (PWD)

2 Bedroom + 2 Bathroom

Apartment:

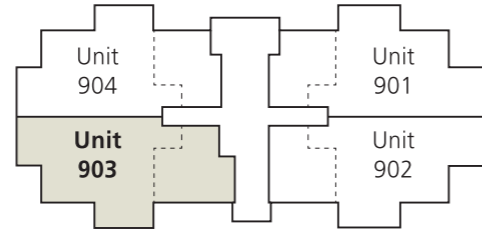
73m<sup>2</sup>

Studio:

27m<sup>2</sup>

**TOTAL AREA:**

**100m<sup>2</sup>**



Level 9



# QUEST ROCKHAMPTON APARTMENT TYPE 7

## Units 102, 302, 502, 702 and 902

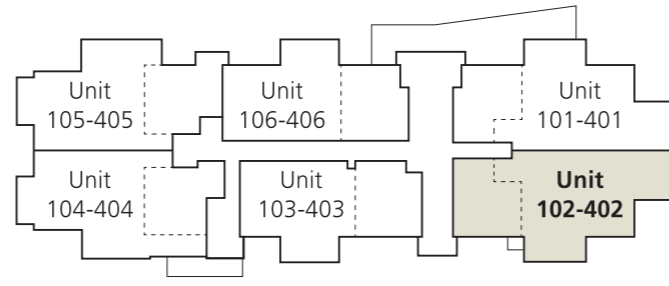
2 Bedroom + 2 Bathroom  
Balcony

**TOTAL AREA:** 81.60 + 17.58 = **99.18m<sup>2</sup>**

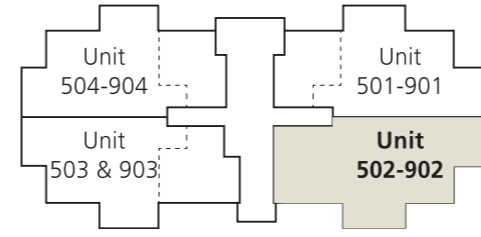
## Units 202, 402, 602 and 802

2 Bedroom + 2 Bathroom  
Balcony

**TOTAL AREA:** 81.60 + 11.63 = **93.23m<sup>2</sup>**



Level 1-4



Level 5-9



# QUEST ROCKHAMPTON APARTMENT TYPE 8

2 Bedroom + 2 Bathroom

Apartment:

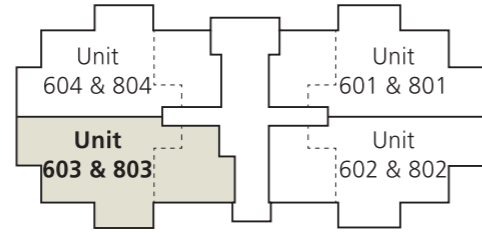
Studio:

**TOTAL AREA:**

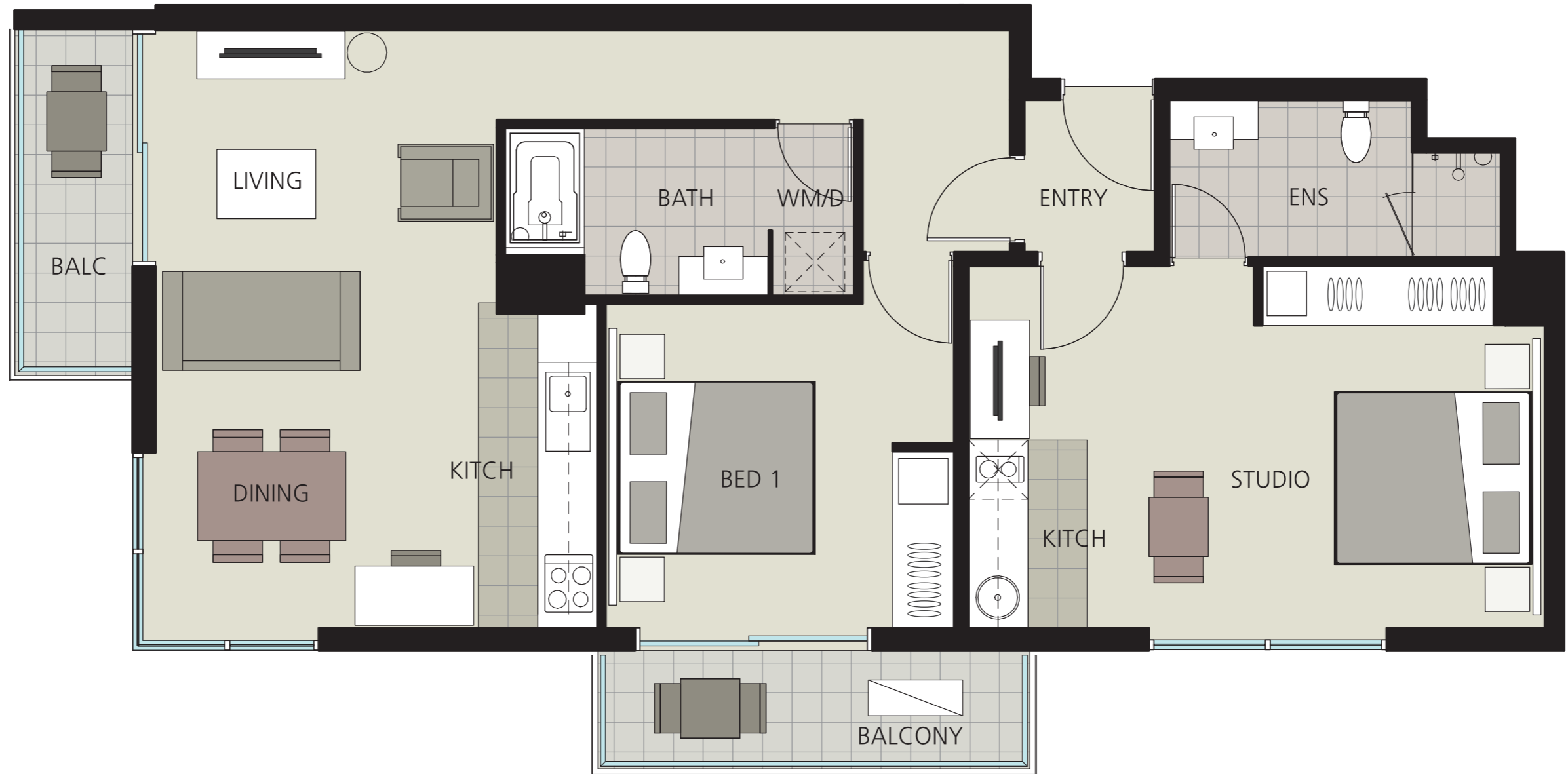
67m<sup>2</sup>

29m<sup>2</sup>

**96m<sup>2</sup>**



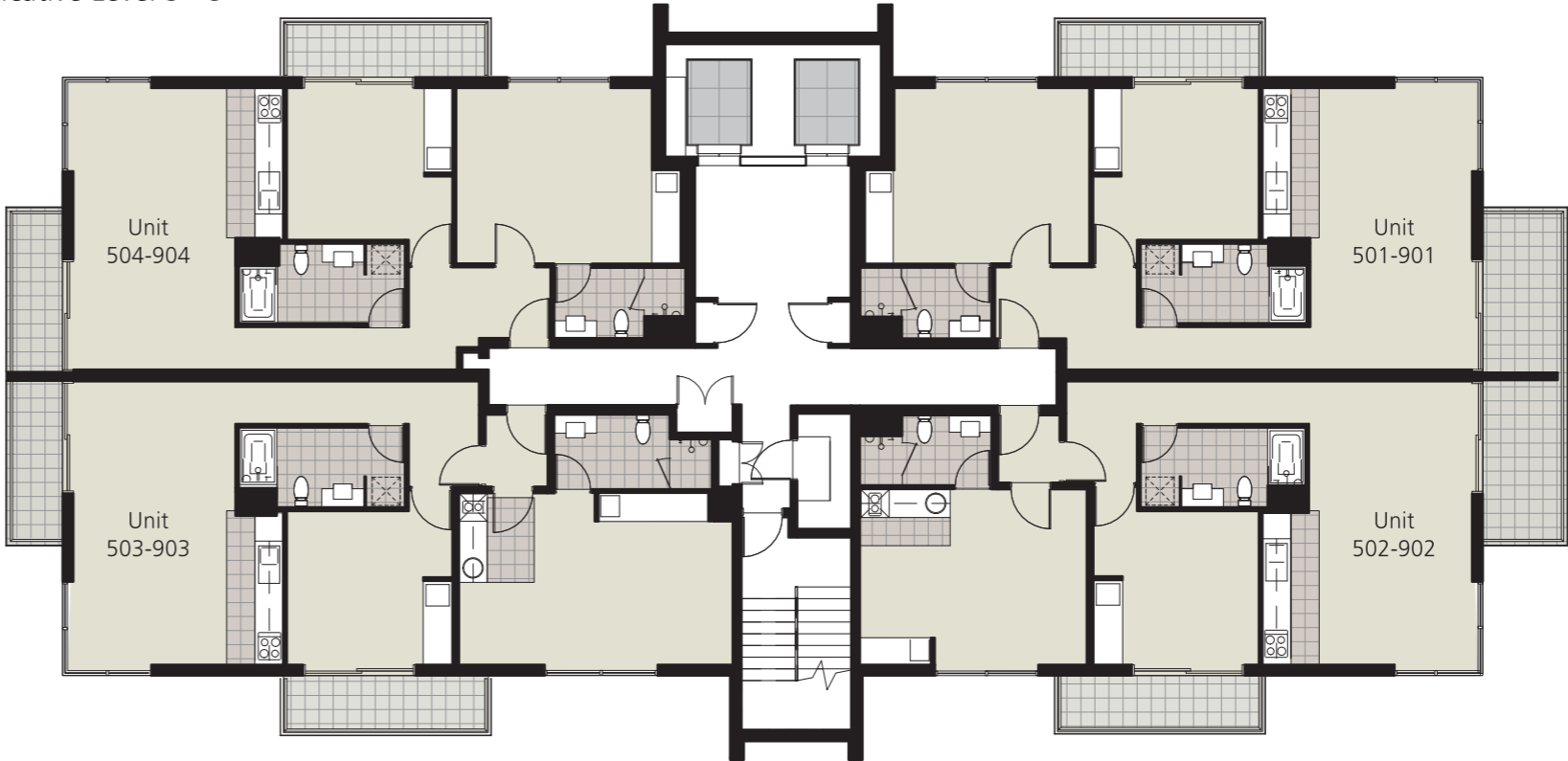
Level 6 & 8





QUEST ROCKHAMPTON  
OVERALL FLOOR PLAN

Indicative Level 5 - 9



Indicative Level 1 - 4



**Disclaimer:** Individual apartments may have slight size variations. The floor plans depicted are indicative only and not to scale. The floor plans and level plans should not be relied upon by the Buyer, and the Seller is not liable to the Buyer as a result of any changes to floor plans, errors or omissions. The information contained in this brochure is for guidance purposes only. All information is provided in good faith and is believed to be accurate, however prospective purchasers should not rely on this information and should make their own enquiries.