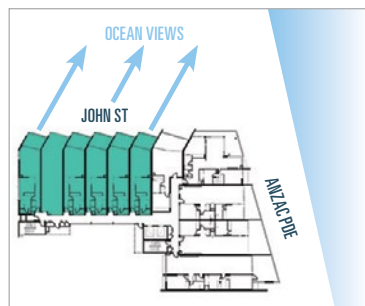
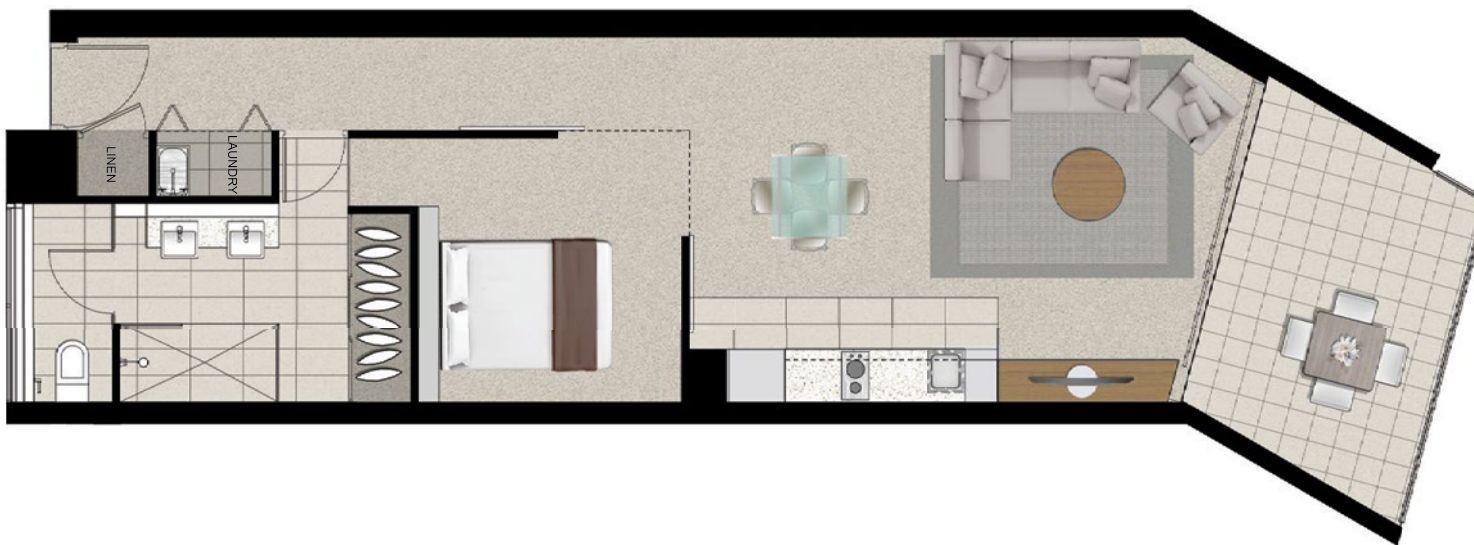


Level	1-4
internal area	60m ²
balcony	11m ²
Total Area	71m ²

Type A

1 Bed | 1 Bath
1 Car

Unit No. 101-106, 201-206, 301-306, 401-406



DISCLAIMER: While every reasonable care has been taken in the preparation of this brochure and all particulars contained herein are believed to be correct at the time of the printing, interested parties must rely upon their own inspections and inquiries. These inserts do not and will not form any part of the contract of sale. Illustrations and photography are for presentational purposes and should be used for indicative purpose only. Please note furniture not included.

1 Bedroom Apartments

Level 1-4

Apartments 103 & 104 have identical floorplans/layouts

Interior finishes specification. All finishes are subject to final selection and availability. Equivalent finishes may be used in some circumstances.

ENTRY/PASSAGEWAY

- **Floors** – Selected wool carpet on underlay
- **Walls** – Low sheen acrylic paint on set plasterboard
- **Ceilings** – Flat acrylic paint on plasterboard

LIVING / DINING

- **Floors** – Selected wool carpet on underlay
- **Walls** – Washable low sheen acrylic paint on set plasterboard
- **Ceilings** – Flat acrylic paint on plasterboard

KITCHEN

- **Floors** – Selected tiles
- **Walls** – Low sheen acrylic paint on set plasterboard
- **Ceilings** – Flat acrylic paint on plasterboard
- **Bench tops** – Selected reconstituted stone
- **Splashbacks** – Selected glass splashback
- **Cupboards** – Gloss Laminate with a feature laminate veneer
- **Sink** – Rectangular, S/S single bowl
- **Mixer** – Single lever polished chrome mixer
- **Cooktop** – S/S 2 burner electric; Smeg or similar
- **Microwave** – S/S Convection microwave; Smeg or similar
- **Rangehood** – S/S slide out rangehood; Smeg or similar
- **Dishwasher** – S/S dishwasher

BEDROOM

- **Floors** – Selected wool carpet on underlay.
- **Walls** – Low sheen acrylic paint on set plasterboard
- **Ceilings** – Flat acrylic paint on plasterboard
- **Built in robe** – Mirrored glass sliding doors; white melamine shelves with hanging rail

BATHROOM

- **Floors** – Selected tiles
- **Walls** – Selected tiles. Full height to shower and vanity
- **Ceilings** – Flat acrylic paint on plasterboard
- **Vanity tops** – Selected reconstituted stone
- **Vanity** – Feature laminate veneer
- **Vanity basins** – Semi recessed white vitreous china
- **Splashback** – Selected tiles
- **Mirror** – Full width mirrors above vanity units
- **Shower screen** – Semi frameless glass
- **Basin taps** – Single lever polished chrome mixer
- **Shower** – Single lever polished chrome mixer
- **Accessories** – Polished chrome accessories

TOILET

- **WC pan** – Vitreous china dual flush
- **Floors** – Selected tiles
- **Walls** – Low sheen acrylic paint with

LAUNDRY

- **Floors** – Selected tiles
- **Laundry tub** – Free standing S/S tub with cabinet
- **Tub splashback** – Selected tiles
- **Dryer** – Simpson or similar

BALCONIES

- **Floors** – Selected tiles
- **Ceilings** – Textured paint finish
- **Balustrading** – Glass infill; aluminium posts and handrails

GENERAL

- **Internal doors** – Flush panel doors with high gloss enamel paint
- **Door hardware** – Selected satin chrome lever handle
- **Air conditioning** – Split system air conditioning to bedroom and living area
- **Hot water service** – Central hot water plant
- **Garbage removal** – Common area single refuse chute to each floor
- **Data / phone points** – Single outlet to kitchen and bedroom
- **Pay TV** – One outlet to living area and bedroom
- **Lifts** – 2 x lifts; security card access to each level
- **Basement** – 1 x secure car space; security card access tile boarder
- **Walls** – Low sheen acrylic paint on set plasterboard